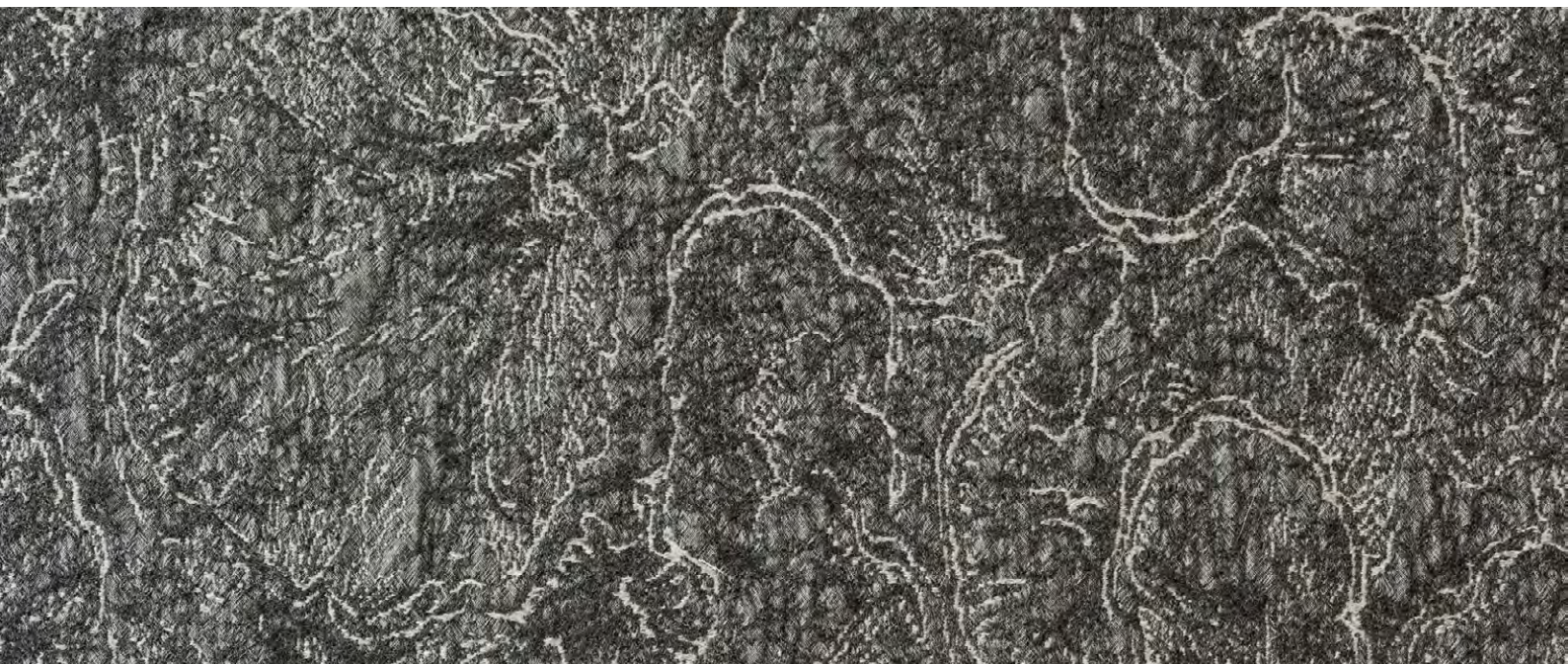




LONDON



## SHELLS GLIMMER

This shell is the Emblem of St James, the patron saint of travellers. Medieval pilgrims referred to it as the Scallop Of St James, and would attach one to their hats in token of their pilgrimage, as well as using the empty shells as makeshift crockery along their journey. Very often, pilgrims who had safely returned home from the holy shrines would affix a scallop shell to the wall of their home as a sign of devotion.

The divergent rays on the shell symbolise the many routes that all converge on one place. In art and architecture, the outline of the Scallop of St James has enjoyed long-standing popularity as part of the ornamentation.

## COMPOSITION:

Wool Matelassé Jacquard,

100% wool

## SIZES

Width: 59" / 150 cm

Repeat: 26.4x27.5" / 67x70 cm

