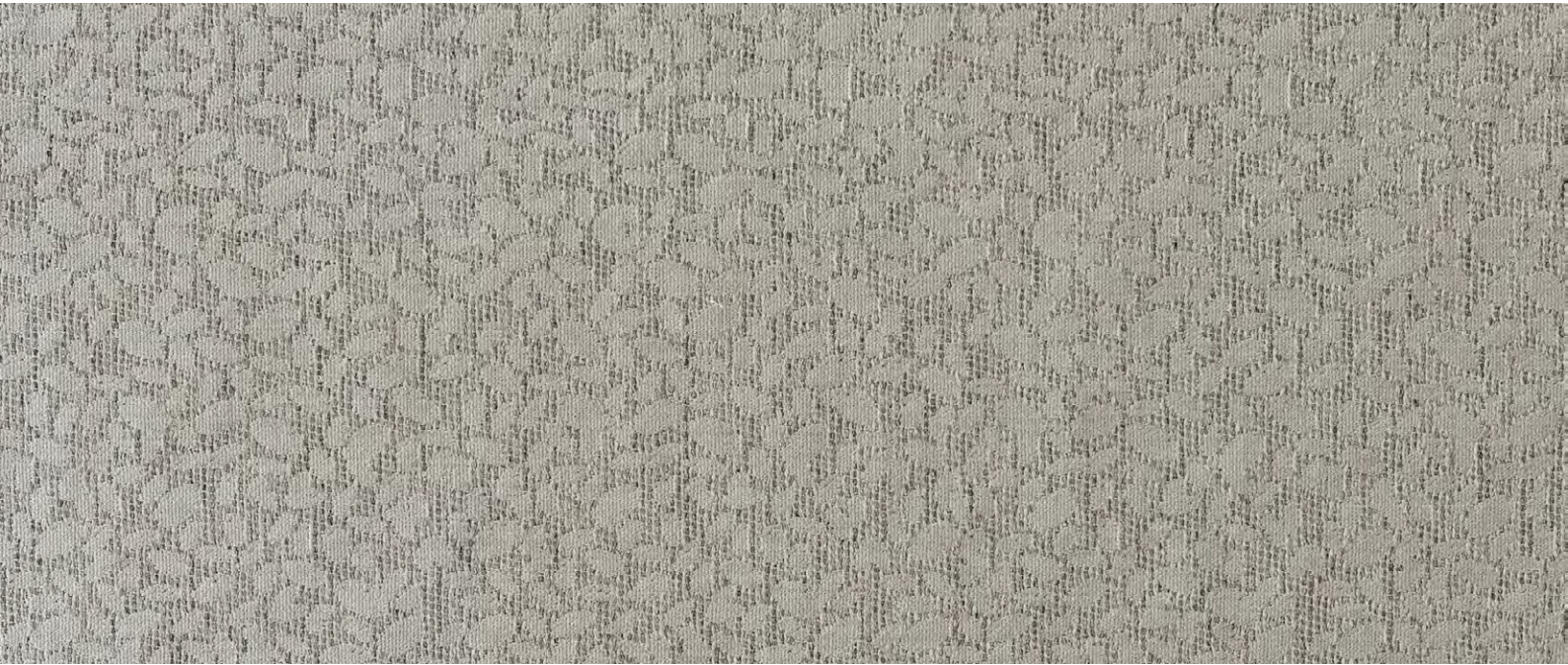




LONDON



## WARMING FIELDS SHEPHERD'S FIELDS

Everything we find in nature is wonderful – in every manifestation of nature we find a synthesis of chaos and order. The whole appears in each part, and from a countless number of these parts a great, organic whole appears.

The flowering heather, the traces of recentlyfallen rain, the sheep dung... all of these thrilling experiences from the ancient Highlands of Scotland enabled us to create this tranquil print with its all-embracing meanings.

### COMPOSITION:

Wool Linen Jacquard,  
94% wool, 6% linen

### SIZES

Width: 59" / 150 cm  
Repeat: 7.5x5.5" / 19x14 cm

